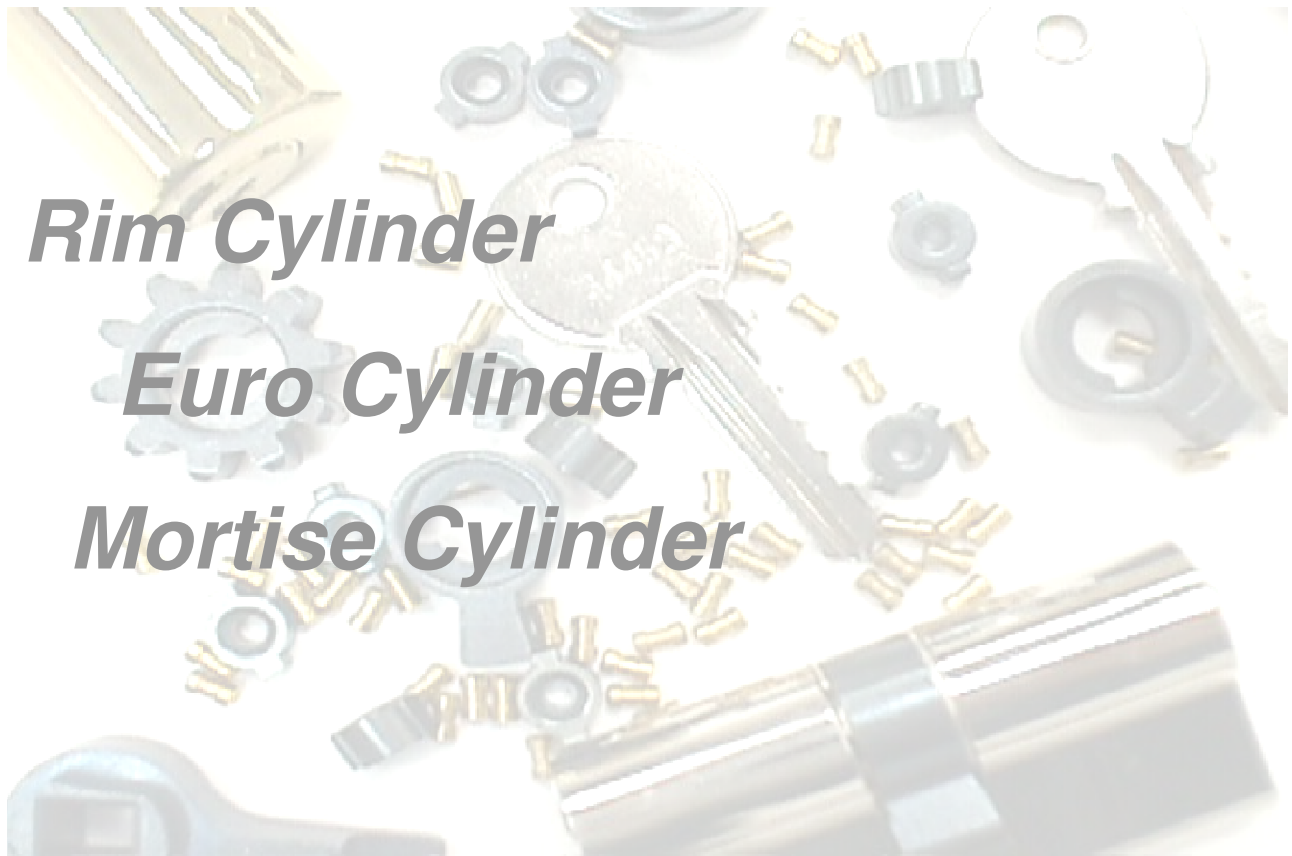


Kin Kei Hardware Industries Limited

E-mail: kinkei@hardware.com.hk Website: www.hardware.com.hk



Rim Cylinder

Euro Cylinder

Mortise Cylinder



VOLAR®

INDEX

A) Cylinder

- 1) Euro Profile Cylinders
 - a) Yale Keyway
 - b) Single Row Pointed Key
 - c) Double Row Pointed Key
 - d) Telescopic Pin Flat Pointed Key
 - e) Oval Profile Cylinder

- 2) Rim Cylinder
 - a) 'S' keyway
 - b) Single row flat pointed keyway
 - c) Double row flat pointed keyway
 - d) Cross key cylinder
 - e) Round Disc cylinder

- 3) Mortise Cylinder
 - a) Mortise Rim Cylinder
 - 'S' keyway
 - Single row flat pointed keyway
 - Cross key cylinder

 - bi) Brass Mortise Cylinder
 - 'S' keyway
 - Single row flat pointed keyway
 - ii) Zinc Alloy Mortise Cylinder
 - 'S' keyway

- 4) Tubular Cylinder

- 5) Disc Tumbler Cylinder

- 6) Tubular Lever Cylinder

European Standard DIN EN 1303

Classification Report Profile cylinder as per EN 1303:2005

Test Report 206 35920 R1



Client **KIN KEI HARDWARE INDUSTRIES LIMITED**

1065 KING'S ROAD,
TAI KOO, HONG KONG
CHINA

Basis

EN 1303 : 2005 "Building
Hardware - Cylinders for locks -
Requirements and test meth-
ods"

Corrigendum DIN EN
1303:2008-09 corrigendum 1

German version
DIN EN 1303:2005-05

Classification Report 206 35920
dated 27 August 2008

Representation

Construction product	5-pin profile cylinder
Designation	"profile cylinder – ST-60"
Product description	Profile cylinder with plug, body and detainers made of brass, 5 single-row, spring-loaded detainers, bit with cam, in double cylinder version for use as single locking.
Cylinder length	60 mm – 100 mm (total length)



According to EN 1303:2005, the coding system for the
profile cylinder is as follows:

Category of use	Durability	Door mass	Fire resistance	Safety	Corrosion resistance	Key related-Security	Attack-resistance
1	6	-	0	0	C	3	0

Instructions for use

The present test report serves to demonstrate conformance with the requirements for profile cylinders as per EN 1303 : 2005.

Validity

The data and results given relate solely to the tested and described test specimen.

Notes on publication

The ift-Guidance Sheet „Conditions and Guidance for the Use of ift Test Documents“ applies.

The cover sheet can be used as abstract.

Contents

The test report comprises a total of 22 pages.

- 1 Object
 - 2 Procedure
 - 3 Detailed results
 - 4 Overall assessment
- Annex 1 (16 pages)

ift Rosenheim
26 January 2011

Christian Kehrer

Christian Kehrer, Dipl.-Ing. (FH)
Head of Testing Department

A. Spreitzer

Alexander Spreitzer
Operating Product Officer
Building Components



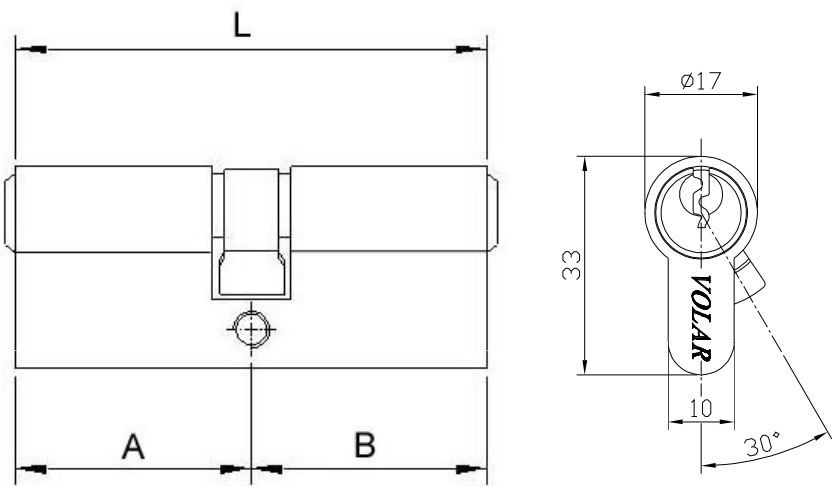
1. Euro Profile Cylinders

a. Yale Keyway Series(LK1788)

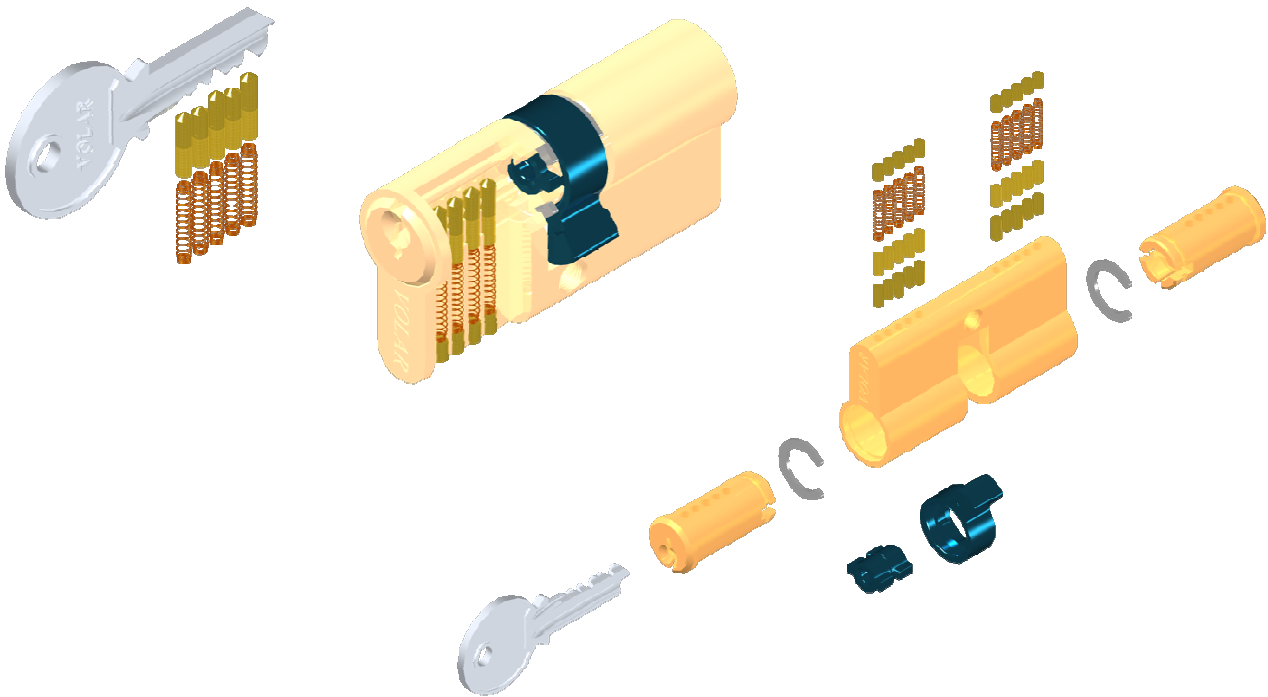
Tested in accordance with Europe standard DIN EN 1303.
 Brass profile lock body with sintered cam and 3 brass keys

Function available for Order

- Anti-drill Pins
- Eight Turning Position
- Panic Function
- Gear Wheel Series (10 teeth / 14 teeth)
- Single Side with Thumb Turn
- Changeable Knob Fixing Function



Pin	L(mm)	A	B
4	56	28	28
5	60	30	30
5	62	30	32
5	65	30	35
5	70	30	40
5	70	35	35
5	75	30	45
5	75	35	40
5	80	30	50
5	80	40	40
5	85	30	55
5	85	40	45
5	90	45	45
5	95	30	65
5	95	40	55
5	100	40	60
5	100	50	50
5	105	50	55
5	110	50	60
5	120	65	55

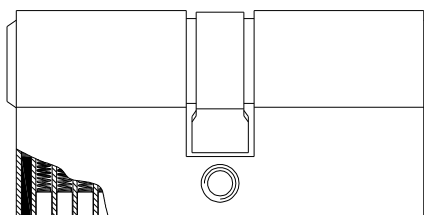


Euro Profile Cylinder Anti-drill Pins (LK5209)

Brass profile body with sintered cam and 3 brass keys.

i. Single Anti-drill Pin Series

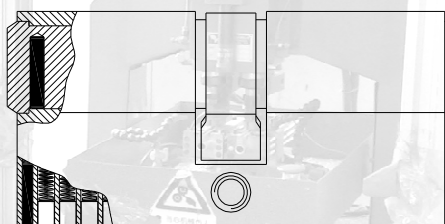
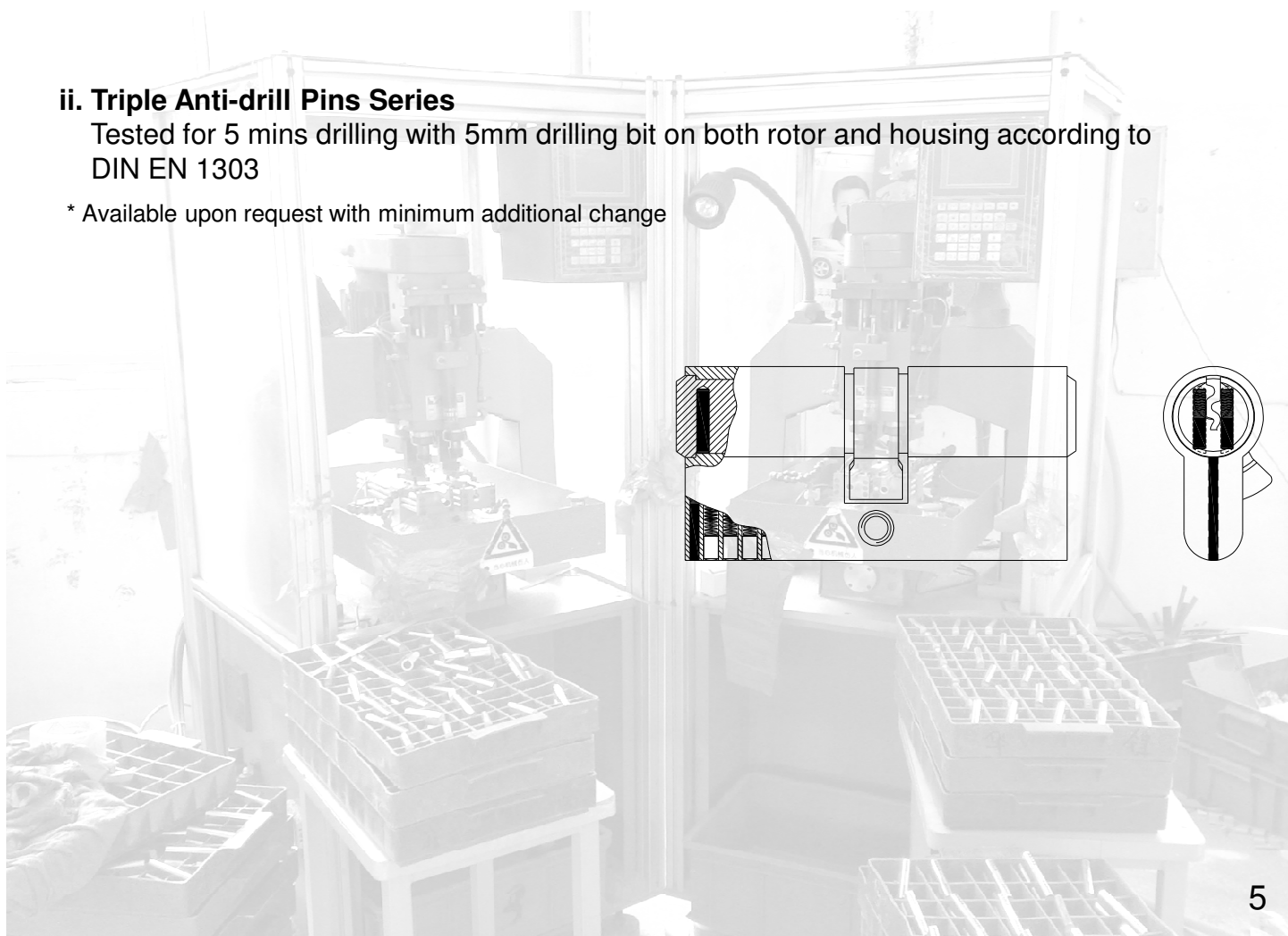
Tested for 5 mins drilling with 5mm drilling bit on housing.



ii. Triple Anti-drill Pins Series

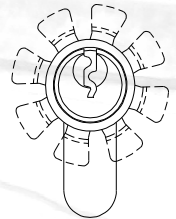
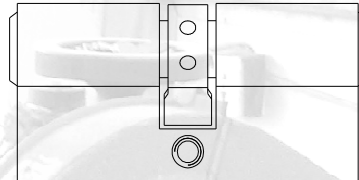
Tested for 5 mins drilling with 5mm drilling bit on both rotor and housing according to DIN EN 1303

* Available upon request with minimum additional charge



Euro Profile Cylinder with Eight Turning Position (LK5256)

Brass profile lock body with sintered cam and 3 keys. 8 different cam position is provided for customer need.



Euro Profile Cylinder with Panic Function (LK1788E)

Yale keyway cylinder. Brass extruded lock body with sintered cam and 3 keys.

* Cylinder will operate even a key has been left on the opposite side of the cylinder.



Euro Profile Cylinder with Anti-snapping Function (LK5283)

Yale keyway cylinder. Brass extruded lock body with sintered cam and 3 keys.



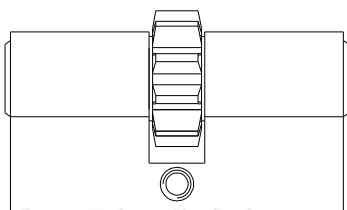
Euro Profile Cylinder with Gear Wheel (LK5147)

Brass extruded lock body with sintered cam and 3 keys.

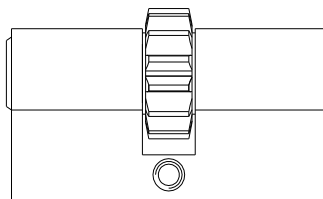


For operating the multiple-bolt locks

a) 10 teeth- available upon request
with minimum additional change

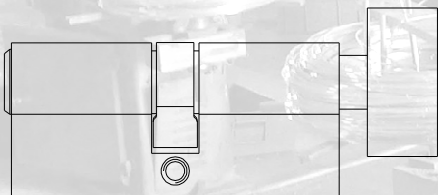


b) 14 teeth- available upon request
with minimum additional change



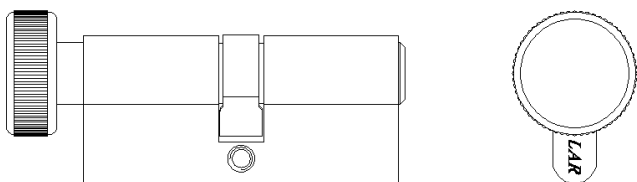
Euro Profile Cylinder with Thumb Turn (LK1789)

Brass extruded lock body with sintered cam and 3 keys.
Key operating on one side. Thumb turn on one side with
positioning bearing on the thumb turn side.

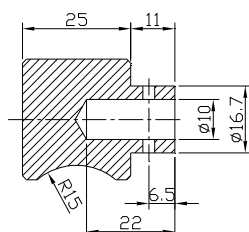
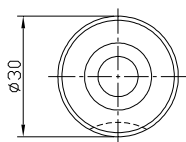


Euro Profile Cylinder Bathroom Series (LK5044)

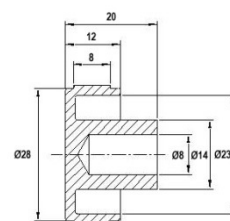
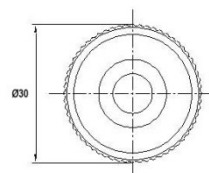
Brass extruded lock body with sintered cam.



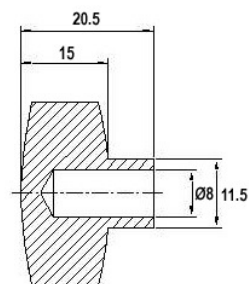
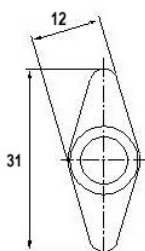
*****Available shape of thumb turn*****



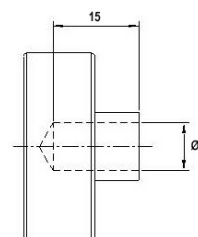
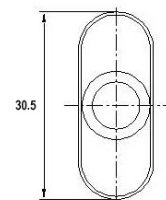
Cylindrical



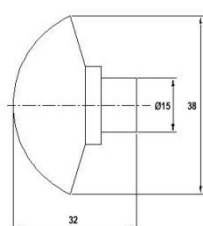
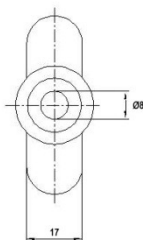
Round



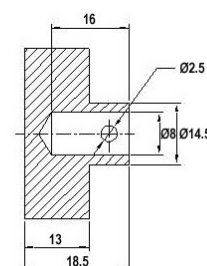
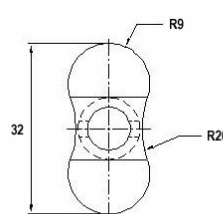
Rhombus



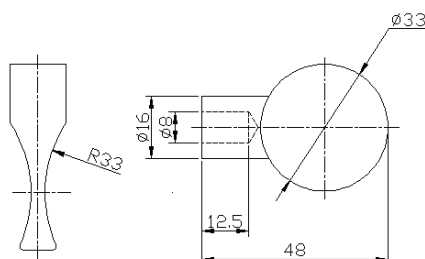
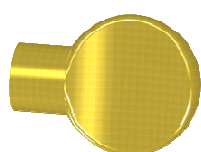
Oval



Fan



Peanut

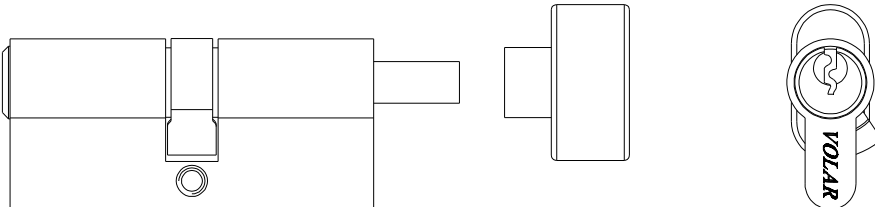


Coin

Euro Profile Cylinder with Changeable Knob Turning

Yale keyway cylinder. Brass extruded lock body with sintered cam and 3 keys.

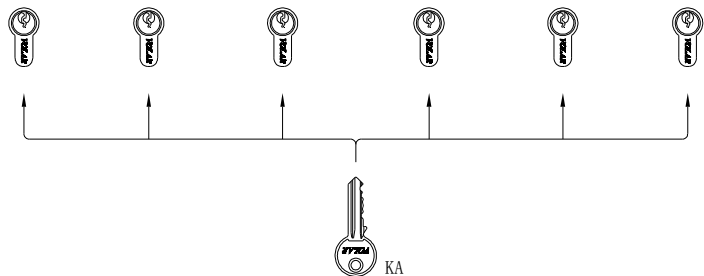
Changeable fixing pin + Hexagon Screw + Thumb Turn



Special Keying systems

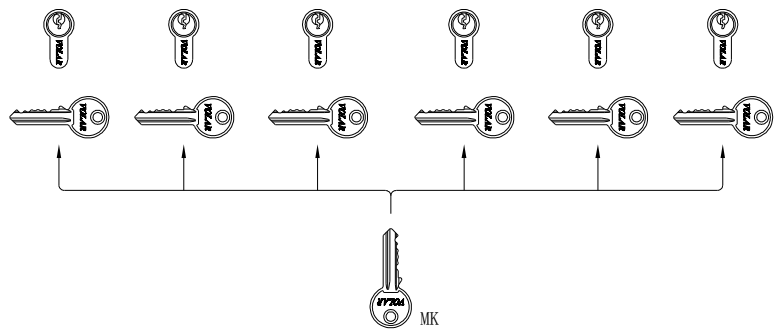
a) Key alike (KA)

All cylinders have the same bitting and the same key can open all



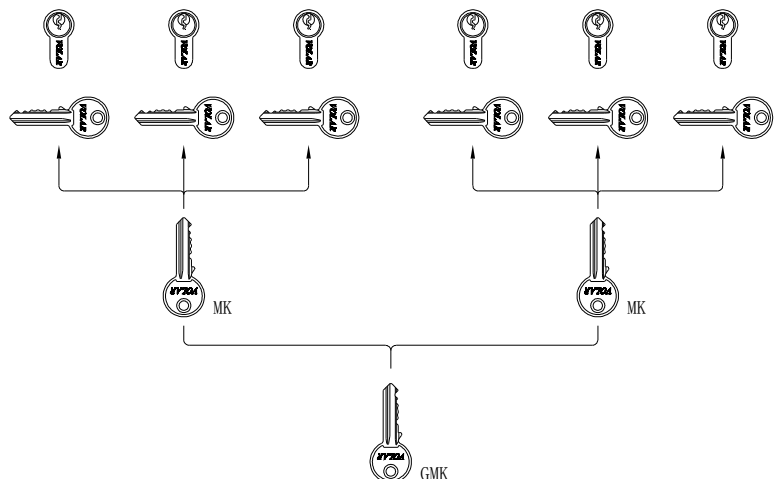
b) Master key (MK)

Each cylinder of a group has its individual bitting but all can be opened by the master key.



c) Grandmaster key (GMK)

All cylinders of two or more MK groups can be opened by the grandmaster key.

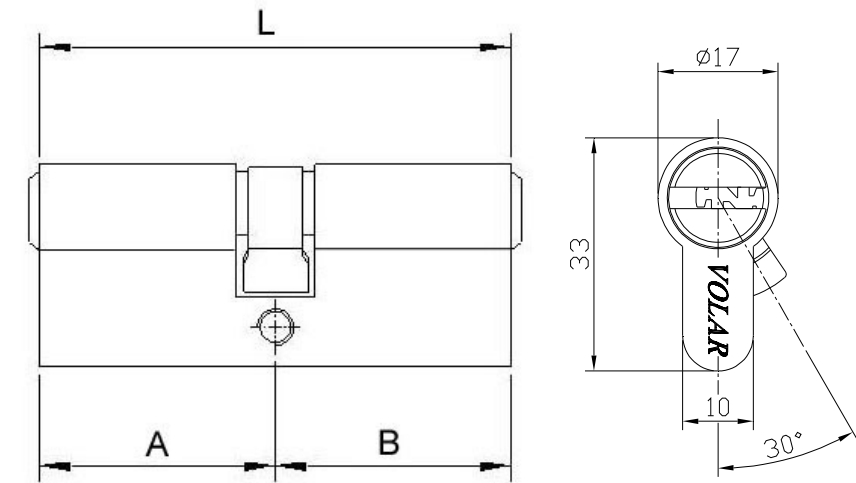


b. Single Row Flat Point Key Series(LK5102)

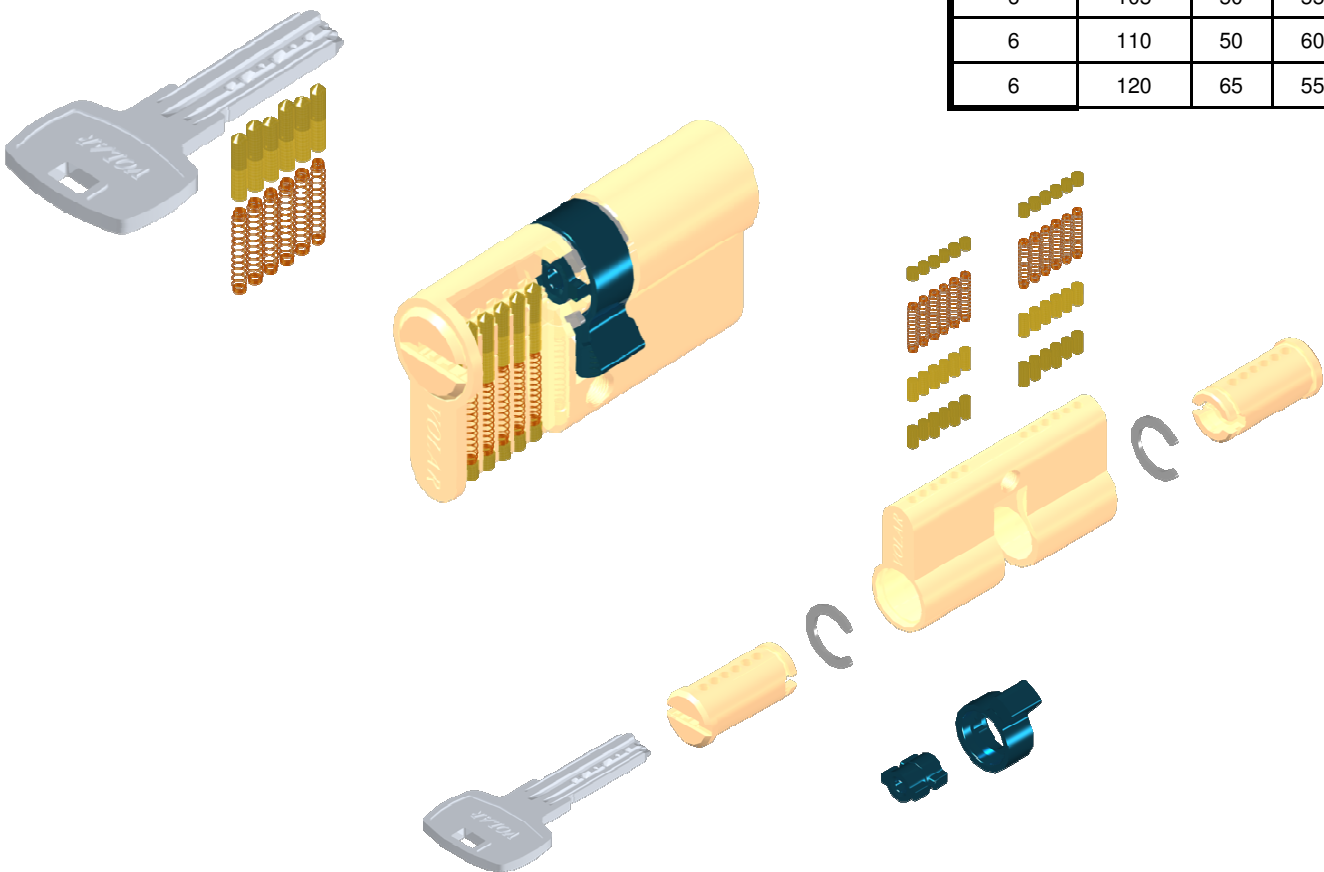
Brass profile lock body with sintered cam and 5 brass keys

Function available for Order

- Anti-drill Pins
- Eight Turning Position
- Gear Wheel Series (10 teeth / 14 teeth)
- Single Side with Thumb Turn



Pin	L(mm)	A	B
5	56	28	28
6	60	30	30
6	62	30	32
6	65	30	35
6	70	30	40
6	70	35	35
6	75	30	45
6	75	35	40
6	80	30	50
6	80	40	40
6	85	30	55
6	85	40	45
6	90	45	45
6	95	30	65
6	95	40	55
6	100	40	60
6	100	50	50
6	105	50	55
6	110	50	60
6	120	65	55



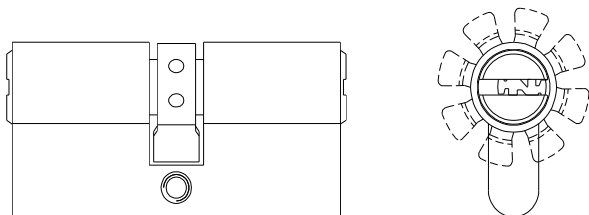
Anti-drill Pins (LK5102)

Brass profile lock body with sintered cam. Single row flat pointed key with 1 anti-drill pin.



Eight Turning Position (LK5262)

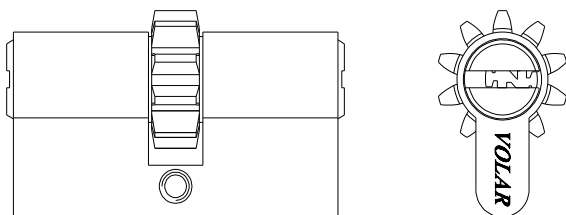
Brass profile lock body. Single row flat pointed key with eight turning position.



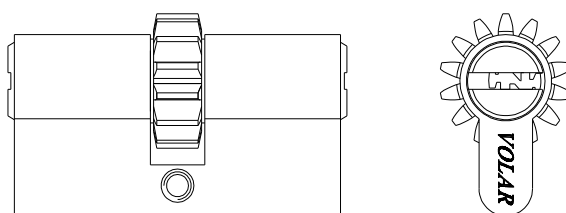
Gear Wheel System (LK5148)

Brass profile lock body. Single row flat pointed key

a) with gear wheel cam 10 teeth

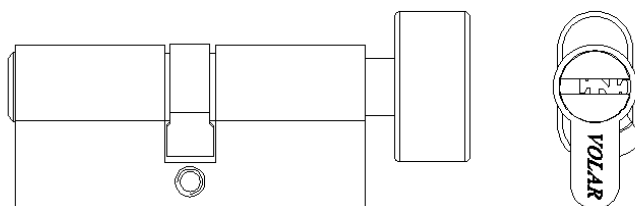


b) with gear wheel cam 14 teeth



Thumb Turn Series (LK5179)

Brass profile lock body. Single row flat pointed key with thumb turn. Available shape of thumb turn, please refer to LK5044

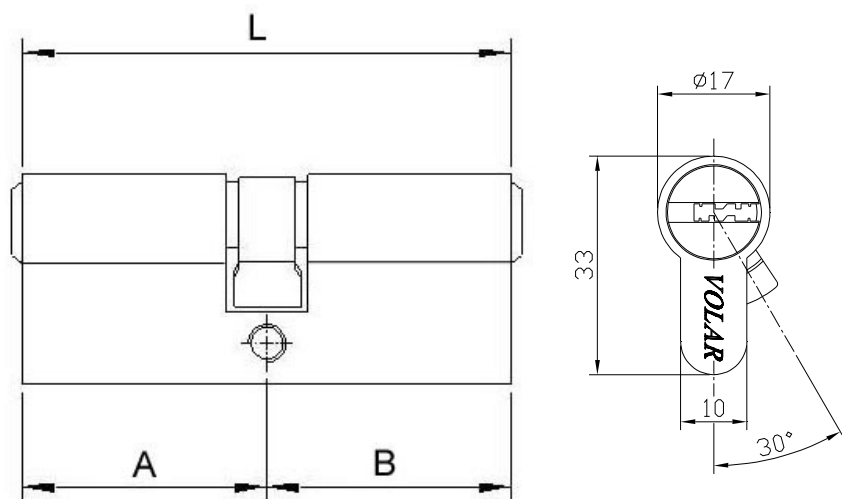


c. Double Row Flat Point Key Series(LK5103)

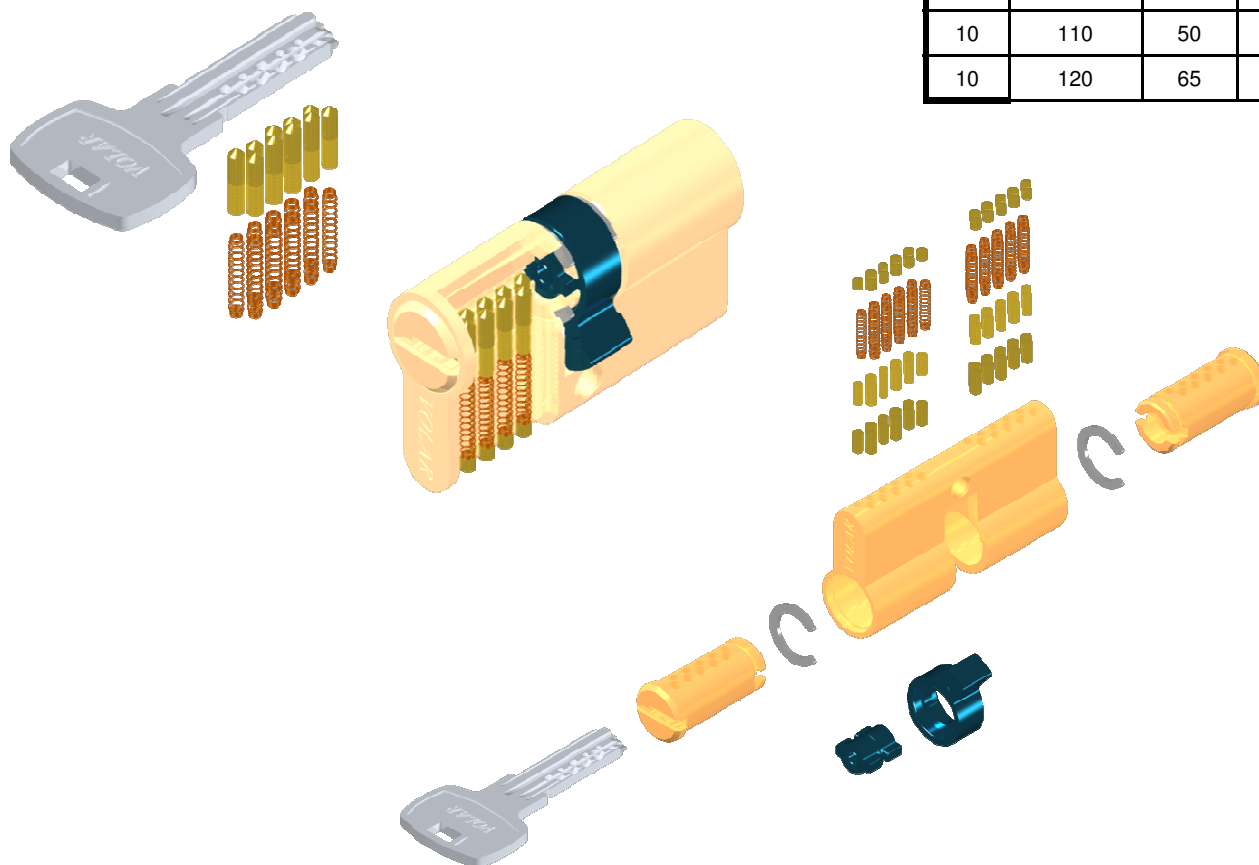
Brass euro profile lock body with sintered cam and 5 brass keys

Function available for Order

- Anti-drill Pins
- Eight Turning Position
- Gear Wheel Series (10 teeth / 14 teeth)
- Single Side with Thumb Turn

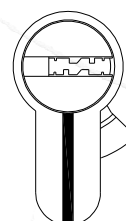
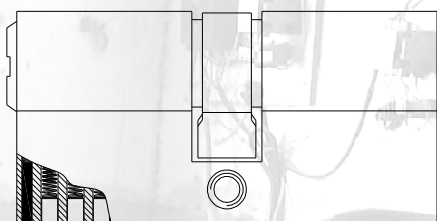


Pin	L(mm)	A	B
8	56	28	28
10	60	30	30
10	62	30	32
10	65	30	35
10	70	30	40
10	70	35	35
10	75	30	45
10	75	35	40
10	80	30	50
10	80	40	40
10	85	30	55
10	85	40	45
10	90	45	45
10	95	30	65
10	95	40	55
10	100	40	60
10	100	50	50
10	105	50	55
10	110	50	60
10	120	65	55



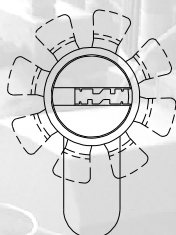
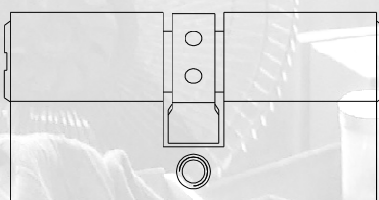
Anti-drill Pins (LK5103)

Brass profile lock body with sintered cam. Double row flat pointed key with 1 anti drill pin.



Eight Turning Position (LK5263)

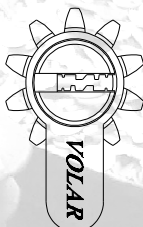
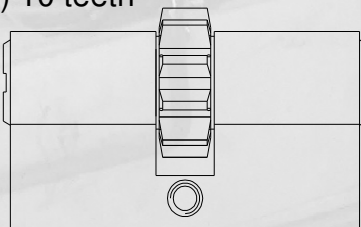
Brass profile lock body with sintered cam, 8 different cam position is provided for customer need.



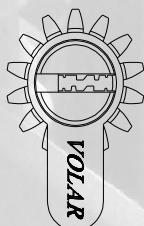
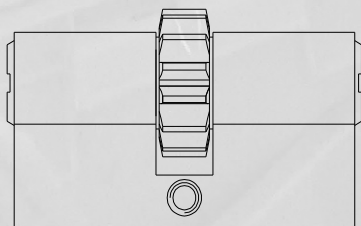
Gear Wheel Series (LK5265 / LK5309)

Brass profile lock body with sintered gear wheel cam, for operating the multiple bolt lock

a) 10 teeth

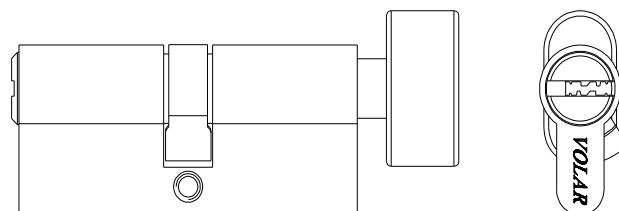


b) 14 teeth



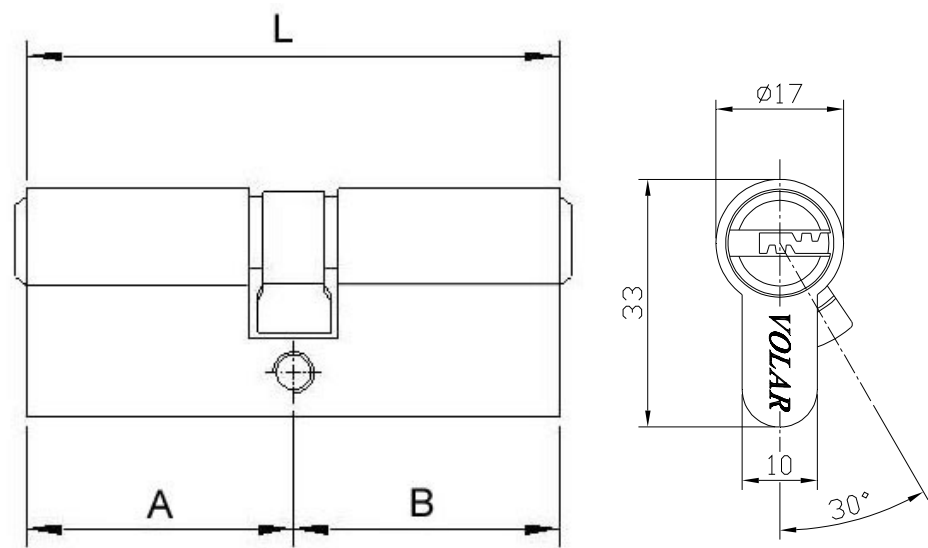
Single Side with Thumb Turn (LK5204)

Available shape of thumb turn, please refer to LK5044

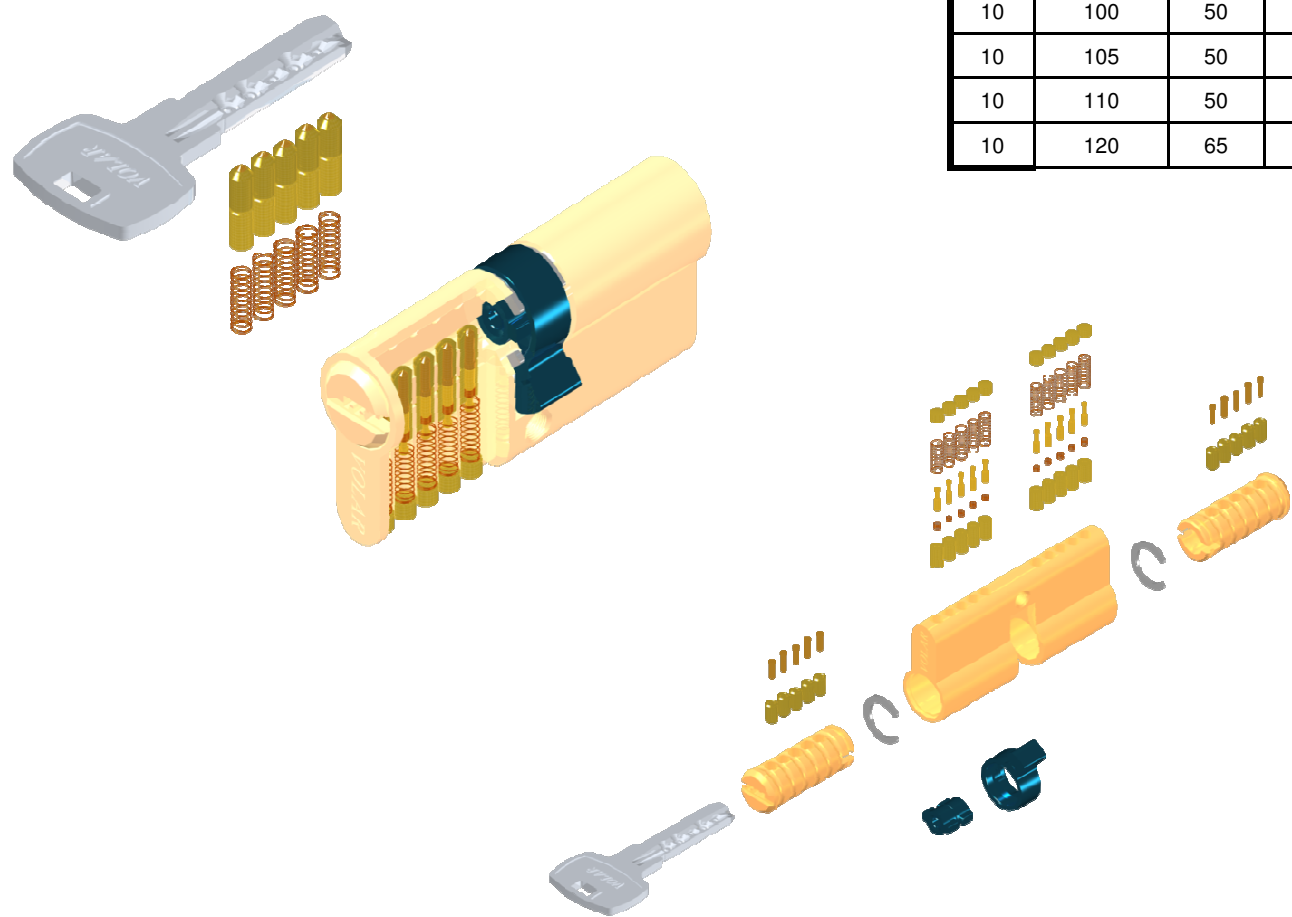


d. Telescopic Pin Flat Pointed Key Series(LK5008) Brass profile lock body with sintered cam and 4 brass keys

- Function available for Order
- Gear Wheel Series (10 teeth / 14 teeth)
 - Single Side with Thumb Turn



Pin	L(mm)	A	B
8	56	28	28
10	60	30	30
10	62	30	32
10	65	30	35
10	70	30	40
10	70	35	35
10	75	30	45
10	75	35	40
10	80	30	50
10	80	40	40
10	85	30	55
10	85	40	45
10	90	45	45
10	95	30	65
10	95	40	55
10	100	40	60
10	100	50	50
10	105	50	55
10	110	50	60
10	120	65	55

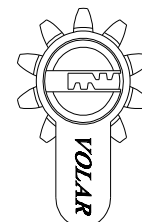
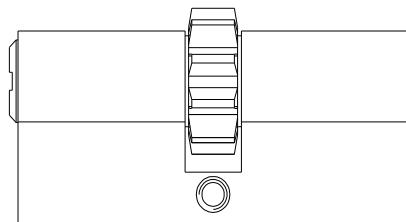


Gear Wheel Series (LK5149)

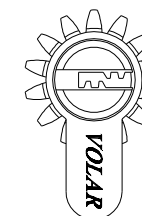
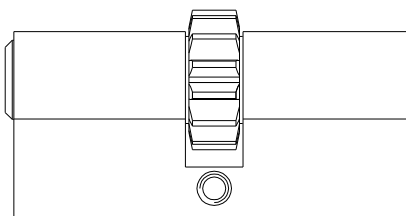
For operating the multi bolt lock



a) 10 teeth

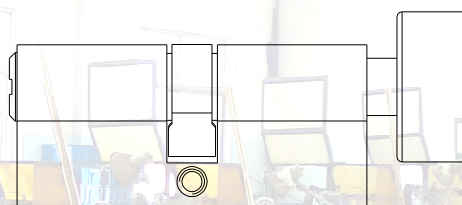


b) 14 teeth



Single side with Thumb Turn (LK5266)

Available shape of thumb turn, please refer to LK5044

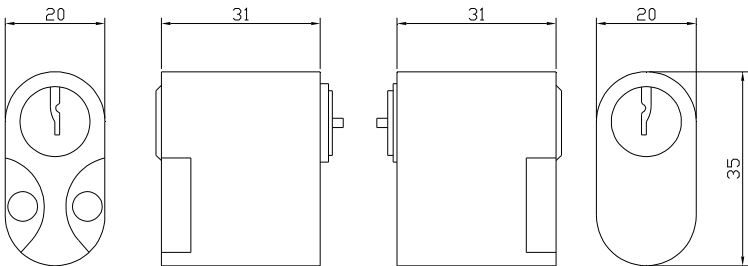


e. Oval Profile Cylinder Brass profile lock case

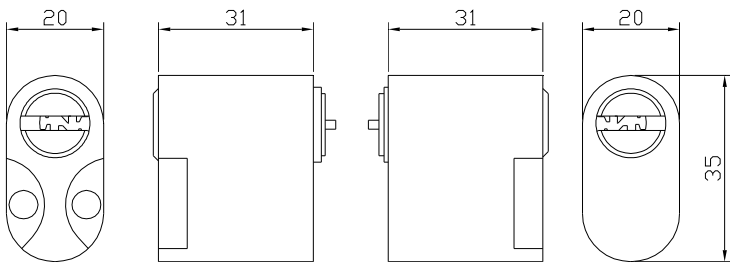
Scandinavian Oval
Large Oval
Small Oval

Scandinavian Oval
 For using with Scandinavian mortise lock case, fixed to lock case with 2 steel screws supplied with accessory set.

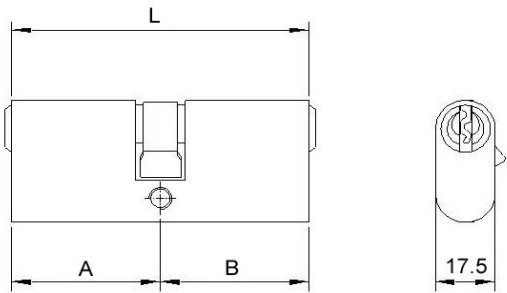
a) "S" keyway series – LK5278 / LK5310



b) Single row flat pointed key series – LK5268

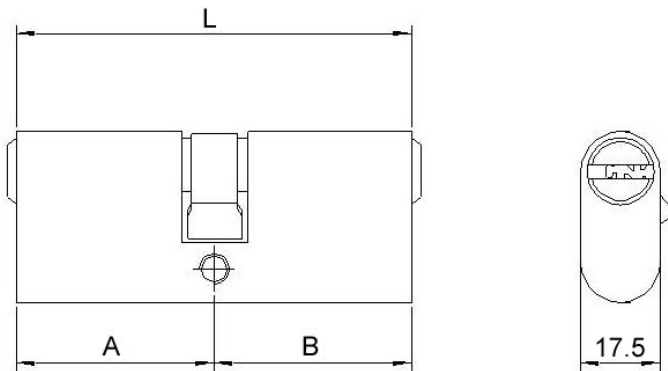


Large Oval
 a) "S" keyway series – LK5016

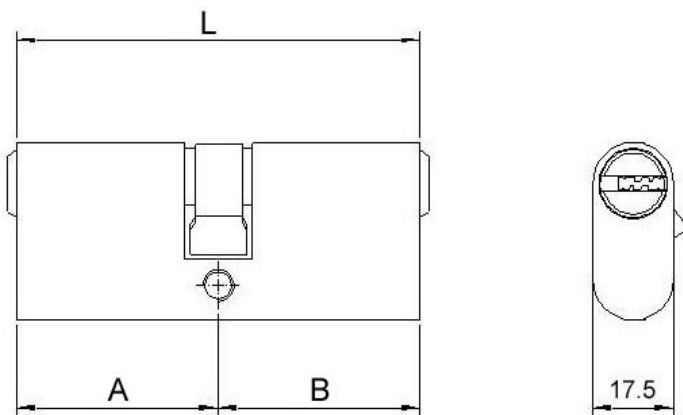


L	A	B
60	30	30
70	35	35
80	40	40

b) Single row flat pointed key series – LK5269



c) Double row flat pointed key series – LK5270

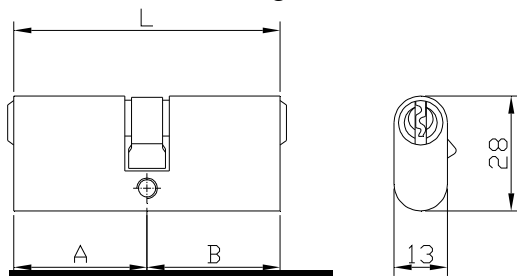


d) Single side with turn knob – LK5271

Available shape of thumb turn, please refer to LK5044

Small Oval (LK1855 / LK1855C)

a) Twins cam and single cam are available



L	A	B
54	27	27
60	30	30



LK1855

LK1855 Single cam



LK1855C Twins cam

b) Single side with turn knob – LK5272

Available only round / rhombus shape of thumb turn, please refer to LK5044



2. Rim Cylinder

Brass profile housing use with rim lock.

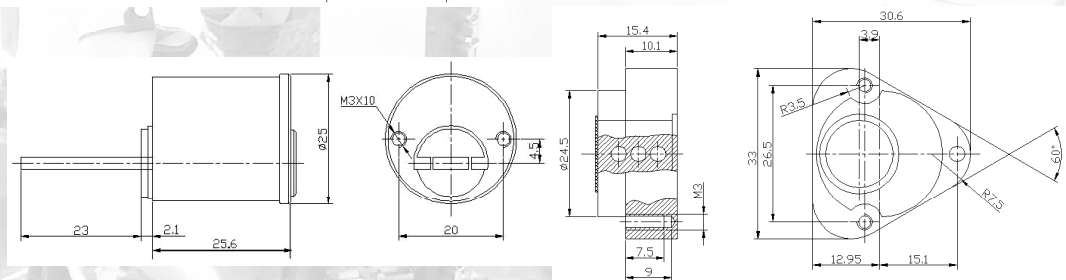
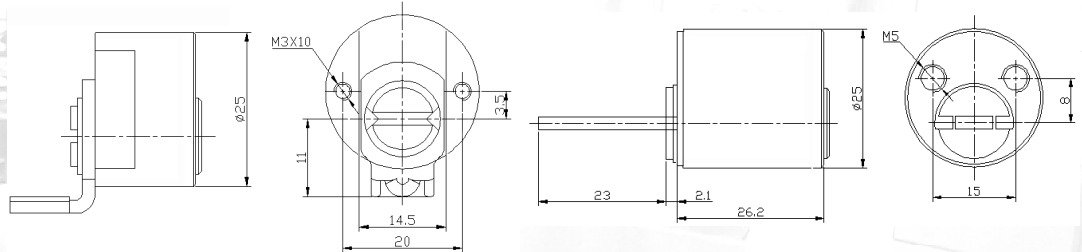
a) 'S' keyway

i) Single side (5 pins) – LK5036



ii) Double cylinder (External & Internal: 5 pins + 3 pins) – LK5030

* Round & triangle internal cylinder are available for order – LK5035



b) Single row flat pointed keyway

Brass profile housing for using with rim lock, with 5 flat pointed keys

i) Single side (6 pins) – LK5206

suspend



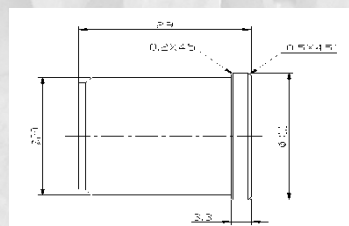
ii) Double cylinder (External & Internal: 6 pins + 4 pins) – LK5197

* Round & triangle internal cylinder are available for order – LK5282



iii) Large round cylinder – LK5273

Dia: 29mm



c) Double row flat pointed keyway

Brass profile housing for using with rim lock, with 5 flat pointed keys

i) Single side

d) Cross key cylinders

i) Single side (12 pins) - LK5127

ii) Double side (External & Internal: 12 pins + 6 pins) – LK5074

Dia: 25.6mm

iii) Large round cylinder – LK5274

Dia: 29mm

iv) Double entry – LK5029

e) Round disc cylinder – LK5208

Dia: 29mm

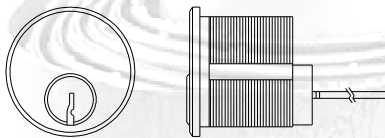


3. Mortise Cylinder

a) Mortise Rim Cylinder – round threaded

Brass profile for using with rim lock and the locking devices accepting screws rim cylinders

i) 'S' keyway 5/6 pins – LK5275

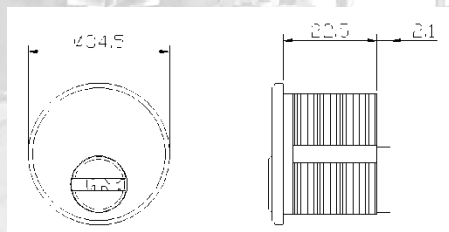


bi) Brass Mortise Cylinder

Brass profile for using with locking devices accept screw-in cylinders.

- 'S' keyway 5/6 pins

i) Mortise single cylinder – LK5194



ii) Mortise double cylinder – LK5243



- Single row flat pointed keyway

i) Mortise single cylinder – LK5276



bii) Zinc Alloy Mortise Cylinder

Zinc alloy die-casting profile for using with locking devices accept screw-in cylinders.

- 'S' keyway 5/6 pins

i) Mortise single cylinder – LK5242



ii) Mortise double cylinder – LK5222



4. Tubular 7 pins cylinder(LK5116)

Brass lock body. For use with rim lock, cam lock and other locking devices.



5. Disc cylinder(LK5258)

For use with cam lock, padlock and other locking devices.





LK5304

LK5304 Brass Rekeyable Double Cylinder with Schlage Keyway



LK5302

LK5302 Brass "Y" Keyway Cylinder



LK5215

LK5215 Zinc Alloy Rectangular Double Cylinder



LK5054

LK5054 Zinc Alloy Euro Cylinder



LK5038

LK5038 Brass Oval Cylinder with Peanut Turn



LK5233

LK5233 Brass Cylinder



LK5286

LK5286 Brass Cylinder Lock

